

# Avalo® Series Medical Cart Line Med/Surg Cart

The Avalo Series Med/Surg Cart meets the demanding requirements of an ever-changing hospital environment. Choose from three standard models that feature an arrangement of 3", 6", and 10" drawers, and customizable drawer divider kits for smart organization of medication and supplies.

A choice of lock systems ensures security and full complement of accessory options permit cart customization for workflow efficiency. The durable frame and spread caster position ensure stability, making the cart easy to move and control, while supporting the latest technology solutions and monitoring equipment.



## Accessories & Options | Contact Us For More!



Bulk Storage Bins



Sharps Container



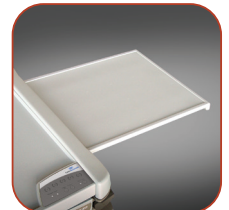
Supply Drawer Divider Kit



Waste Container



Tilt Bin Organizer



Slide-Out Shelf

## Cart Specifications

	Surface Height	Depth	Width
<b>Standard</b>	43.5" / 111 cm	24" / 61 cm	31" / 79 cm
<b>Intermediate</b>	39.5" / 100 cm	24" / 61 cm	31" / 79 cm
<b>Compact</b>	36" / 91 cm	24" / 61 cm	31" / 79 cm

## Drawer Specifications

	Height	Depth	Width
<b>Three Inch</b>	3" / 7.6 cm	17.5" / 45 cm	21.5" / 55 cm
<b>Six Inch</b>	6.25" / 16 cm	17.5" / 45 cm	21.5" / 55 cm
<b>Ten Inch</b>	10" / 25 cm	17.5" / 45 cm	21.5" / 55 cm

## Med/Surg Cart Features

- Precision-welded steel frame with durable, high-impact panels
- Lightweight design and profile simplify movement and steering
- Seamless drawer trays are easy-to-clean and feature premium, self-closing drawer slides
- Wide selection of accessories and organization systems
- Expansive work area with optional slide-out work surface
- Delivered fully assembled, no tools required
- 10-year limited warranty

## Model Options



Standard



Intermediate



Compact

*Specifications, availability & components are subject to change without notice.*



# Avalo® Series Medical Carts

## Specifications

Standard Height



Intermediate Height



Compact Height



### Cart Specifications

	Surf. Height	Depth	Width
<b>Standard Height:</b>	43.0"	24"	31"
	110 cm	61 cm	79 cm
<b>Intermediate Height:</b>	39.5"	24"	31"
	100 cm	61 cm	79 cm
<b>Compact Height:</b>	36.0"	24"	31"
	91 cm	61 cm	79 cm

### Drawer Specifications

Height	Depth	Width
3"	17.5"	21.5"
7 cm	45 cm	55 cm
6.25"	17.5"	21.5"
16 cm	45 cm	55 cm
10"	17.5"	21.5"
25 cm	45 cm	55 cm

Specifications, availability & components are subject to change without notice.

### Avalo® Medical Carts are Certified



**RoHS** Restriction of Hazardous Substances



**ISO** Quality Management System Standard



**ISO** Quality Management System Standard



**UL** Meets UL Safety Requirements



**TUV** Recognized for Quality, Safety and Sustainability



# Avalo® Series Medical Carts

## Options & Accessories



Divided Drawer Tray



Drawer Dividers



Sharps/Glove Holder



Storage Container



Cardiac Board



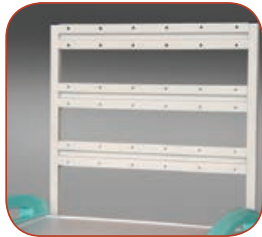
I.V. Pole



Drawer Tag Holder



Oxygen Tank Holder



Accessory Bridge



Bulk Storage Bins



Tilt Bin Organizers



Tracking Wheel



Clear Top Mat



Storage Module



Internal Lock Box



Plug Outlet Strip  
*UL1363A Rated*



Defibrillator Shelf



Waste Container



Writing Surface



Computer Arm