

HI-CARE E

2 TIER STORAGE CONFIGURATIONS OPTIONS

19



(1x) Two-Tier Drawer

20



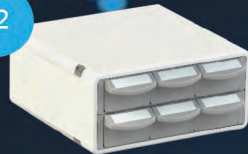
(2x) One-Tier Drawer

21



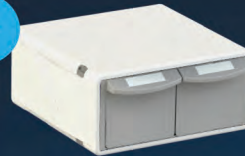
(4x) 6" Patient Bins

22



(6x) 4" Patient Bins

23



(2x) Two-Tier 6" Patient Bins

24



(3x) Two-Tier 4" Patient Bins

Drawer Dimensions



1 Tier Drawer: 12" W x 2.25" H x 11"D



4" Bins: 4" W x 2.25" H x 11"D



6" Bins: 6" W x 2.25"H x 11"D



2 Tier Drawer: 12" W x 5.25"H x 11"D



2 Tier 4" Bins: 4" W x 5.25" H x 11"D



2 Tier 6" Bins: 6" W x 5.25"H x 11"D

ELECTRONICS

BASIC ELECTRONICS

- Support 2000 Unique Codes
- Limited Audit Log
- Supports Independent, Second Level Locking for Securing Narcotics

ADVANCED ELECTRONICS

- Support 2000 Unique Codes
- Complete Audit Log
- Supports Independent, Second Level Locking for Securing Narcotics
- Open Drawer Alert
- Auto On/Off Storage Light
- On-Screen Drawer Configuration and Status via Med Display

FEATURES

LOCKING OPTIONS

- Control Panel (Electronic)
- Independent Key Bypass

STORAGE OPTIONS

- 2, 4, 6 Tiers of Configurable Storage
- 100+ Storage Configurations
- Patient Bins (Dividers Included)
- Storage Drawers (Dividers Included)
- Double Lock Narc Drawers (Optional)
- Quick Swap Cassette Exchange
- Adjustable Auto Locking Timeout

HI-CARE E

4 TIER STORAGE CONFIGURATIONS OPTIONS



25



(2x) Two-Tier Drawer

26



(2x) One-Tier Drawer
(1x) Two-Tier Drawer

27



(3x) 6" Patient Bins
(1x) Two-Tier Drawer

28



(6x) 4" Patient Bins
(1x) Two-Tier Drawer

29



(4x) One-Tier Drawer

30



(8x) 6" Patient Bins

31



(12x) 4" Patient Bins

32



(2x) Two-Tier 6" Patient

33



(3x) Two-Tier 4" Patient Bins
(1x) Two-Tier Drawer

Drawer Dimensions



1 Tier Drawer: 12" W x 2.25" H x 11"D



4" Bins: 4" W x 2.25" H x 11"D



6" Bins: 6" W x 2.25" H x 11"D



2 Tier Drawer: 12" W x 5.25" H x 11"D



2 Tier 4" Bins: 4" W x 5.25" H x 11"D



2 Tier 6" Bins: 6" W x 5.25" H x 11"D

ELECTRONICS

BASIC ELECTRONICS

- Support 2000 Unique Codes
- Limited Audit Log
- Supports Independent, Second Level Locking for Securing Narcotics

ADVANCED ELECTRONICS

- Support 2000 Unique Codes
- Complete Audit Log
- Supports Independent, Second Level Locking for Securing Narcotics
- Open Drawer Alert
- Auto On/Off Storage Light
- On-Screen Drawer Configuration and Status via Med Display

FEATURES

LOCKING OPTIONS

- Control Panel (Electronic)
- Independent Key Bypass

STORAGE OPTIONS

- 2, 4, 6 Tiers of Configurable Storage
- 100+ Storage Configurations
- Patient Bins (Dividers Included)
- Storage Drawers (Dividers Included)
- Double Lock Narc Drawers (Optional)
- Quick Swap Cassette Exchange
- Adjustable Auto Locking Timeout

HI-CARE E

6 TIER STORAGE CONFIGURATIONS OPTIONS



34

(3x) Two-Tier Drawer



35

(2x) One-Tier Drawer
(2x) Two-Tier Drawer



36

(3x) 6" Patient Bins
(2x) Two-Tier Drawer



37

(6x) 4" Patient Bins



38

(6x) One-Tier Drawer



39

(10x) 6" Patient Bins



40

(18x) 4" Patient Bins



41

(4x) Two-Tier 6" Patient Bins
(1x) Two-Tier Drawer



42

(6x) Two-Tier 4" Patient Bins
(1x) Two-Tier Drawer



43

(6x) Two-Tier 6" Patient Bins



44

(9x) Two-Tier 4" Patient Bins

Drawer Dimensions



1 Tier Drawer: 12" W x 2.25" H x 11"D



4" Bins: 4" W x 2.25" H x 11"D



6" Bins: 6" W x 2.25" H x 11"D



2 Tier Drawer: 12" W x 5.25" H x 11"D



2 Tier 4" Bins: 4" W x 5.25" H x 11"D



2 Tier 6" Bins: 6" W x 5.25" H x 11"D

ELECTRONICS

BASIC ELECTRONICS

- Support 2000 Unique Codes
- Limited Audit Log
- Supports Independent, Second Level Locking for Securing Narcotics

ADVANCED ELECTRONICS

- Support 2000 Unique Codes
- Complete Audit Log
- Supports Independent, Second Level Locking for Securing Narcotics
- Open Drawer Alert
- Auto On/Off Storage Light
- On-Screen Drawer Configuration and Status via Med Display

FEATURES

LOCKING OPTIONS

- Control Panel (Electronic)
- Independent Key Bypass

STORAGE OPTIONS

- 2, 4, 6 Tiers of Configurable Storage
- 100+ Storage Configurations
- Patient Bins (Dividers Included)
- Storage Drawers (Dividers Included)
- Double Lock Narc Drawers (Optional)
- Quick Swap Cassette Exchange
- Adjustable Auto Locking Timeout