

Available Models

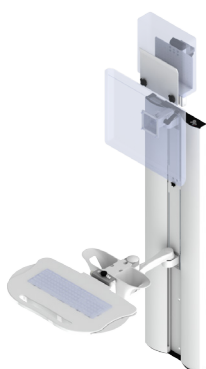
Sidekicks are available for all models. Examples below are shown without sidekick.

AHC-1-L4-K4-CA



- Includes flush LCD SSM arm – provides tilt and swivel
- Includes flush keyboard SSM arm – provides swivel and negative tilt
- Folds to less than 10"(25.4 cm) from wall
- Keyboard extends 23"(58.42 cm) from wall

AHC-1-L4-K0-CA



- Includes flush LCD SSM arm – provides tilt and swivel
- Includes 12" (30.48 cm) keyboard SSM arm – provides swivel, articulation and negative tilt
- Folds to less than 10"(25.4 cm) from wall
- Keyboard extends 33"(83.82 cm) from wall

AHC-1-L4-K1-CA



- Includes flush LCD SSM arm – provides tilt and swivel
- Includes 12"x12" (30.48 cm x 30.48 cm) keyboard SSM arm – provides swivel, articulation and negative tilt
- Folds to less than 10"(25.4 cm) from wall
- Keyboard extends 43"(109.22 cm) from wall

AHC-1-L0-K0-CA



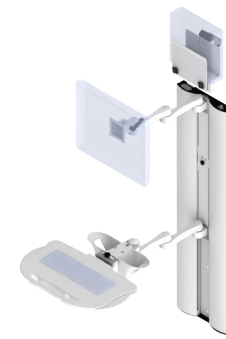
- Includes 12" (30.48 cm) LCD SSM arm – provides tilt, articulation and swivel
- Includes 12" (30.48 cm) keyboard SSM arm – provides swivel, articulation and negative tilt
- Folds to less than 10"(25.4 cm) from wall
- Keyboard extends 33"(83.82 cm) from wall, LCD extends 17"(43.18 cm) from wall

AHC-1-L0-K1-CA



- Includes 12" (30.48 cm) LCD SSM arm – provides tilt, articulation and swivel
- Includes 12"x12" (30.48 cm x 30.48 cm) keyboard SSM arm – provides swivel, articulation and negative tilt
- Folds to less than 10"(25.4 cm) from wall
- Keyboard extends 43"(109.22 cm) from wall, LCD extends 17"(43.18 cm) from wall

AHC-1-L1-K1-CA



- Includes 12"x12" (30.48 cm x 30.48 cm) LCD SSM arm – provides tilt, articulation and swivel
- Includes 12"x12" (30.48 cm x 30.48 cm) keyboard SSM arm – provides swivel, articulation and negative tilt
- Folds to less than 10"(25.4 cm) from wall
- Keyboard extends 43"(109.22 cm) from wall, LCD extends 27"(68.58 cm) from wall

AHC-1-LF-KF-CA



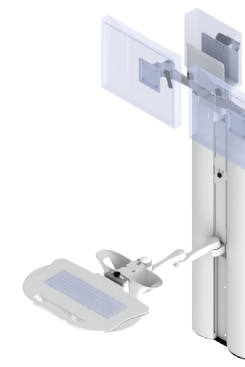
- Includes ultra flush LCD mount
- Includes ultra flush keyboard SSM arm – provides negative tilt
- Folds less than 5"(12.7 cm) from the wall
- Keyboard extends 17"(43.18 cm) from wall

AHC-1-LD-K4-CA



- Includes dual screen mount – provides tilt, swivel and articulation for both monitors
- Includes flush keyboard SSM arm – provides swivel and negative tilt
- Folds to less than 10"(25.4 cm) from wall
- Keyboard extends 23"(58.42 cm) from wall

AHC-1-LD-K3-CA



- Includes dual screen mount – provides tilt, swivel and articulation for both monitors
- Includes 12"x12" (30.48 cm x 30.48 cm) keyboard SSM arm – provides swivel and negative tilt
- Folds to less than 10"(25.4 cm) from wall
- Keyboard extends 43"(109.22 cm) from wall

Computer Mounting Accessories

Power Bar



- Hospital grade, 4 power outlets
- 120 VAC, 60Hz

Part Number: PWRBAR4-MON

Power Holder



- Holds most power adapters for PCs, patient monitors and LCDs

Part Number: PWRHLD-MON

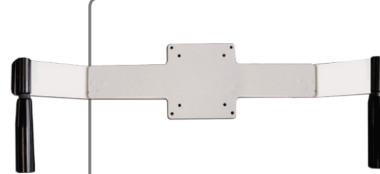
Cord Wrap



- Ideal for Managing wires and cords

Part Number: CORDWRAP

LCD Handle



- Ergonomic handles can be added to any Amico LCD mount
- Knuckle guard protects walls and user's hands
- Weight: 4.3lbs (1.9kg)

Part Number: MON-LCD-HANDLE

Color Options



Call for part number.

Bar Code Scanner Holder



- Universal bar code scanner holder

Call for part number.

Wire Baskets



10"W x 06"D x 09" H
(25.4 cm x 15.24 cm x 22.86 cm)
White wire basket
Part No: 100609-MON-BB



13"W x 09"D x 07" H
(33.02 cm x 22.86 cm x 17.78 cm)
BP cuff basket
Part No: CUFBASK-MON

All baskets can be sterilized

Printer Mounts



- Mounts most portable printers to conveniently print at the bedside

CPU Mounts



- Available Sizes:
- 1.5" - 3" (3.81 cm - 7.62 cm)
Part No: CPUMNT1-MON
- 1.5" - 7" (3.81 cm - 17.78 cm)
Part No: CPUMNTA-MON
- 7" - 9.5"(17.78 cm - 24.13 cm)
Part No: CPUMNT4-MON



- Thin client mount behind LCD
- 10" x 10" x 1.75"
(25.4 cm x 25.4 cm x 4.45 cm)
- 10" x 10" x 3"
(25.4 cm x 25.4 cm x 7.62 cm)



- Enclosed CPU Mount



- Tangent Rugged Mini mount

NOTE: All dimensions are not exact.

Please visit www.amico.com for all technical specifications, installation instructions, detailed AutoCAD drawings and more Mounting Solutions.



Distributed By:

convergent | innovative medical

Innovative Medical | 114info@convergent.com | 800-968-3135